

The logo consists of three concentric, overlapping circles in green, yellow, and blue, arranged in a partial arc on the left side of the page.

## Scadbury Park Acorn Trail - Post 17

Turn right here and as you walk up the hill you can see a new hedge of native species planted on your right. It includes ***dogwood, field maple, guelder rose*** and ***hawthorn***.

Many different minibeasts/invertebrates feed on the different plants and are themselves food for birds and bats. ***Bats*** also use the hedgelines to help them navigate through the landscape.



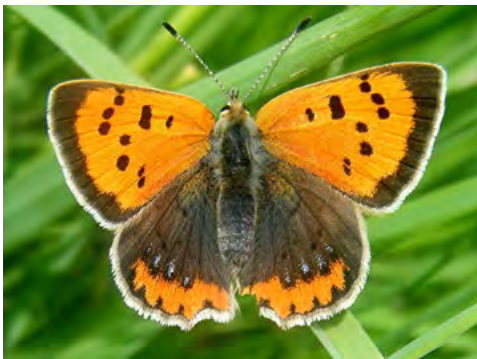
*Common pipistrelle bat*

*(courtesy of the Bat Conservation Trust)*

Cross the meadow to Post 18, looking for nectar rich ***hardheads, birds-foot-trefoil*** (food plant of ***Common Blue Butterfly*** caterpillars) and ***Common Sorrel*** (food plant of ***Small Copper Butterfly*** caterpillars).



*Common blue butterfly*



*Small copper butterfly*

